



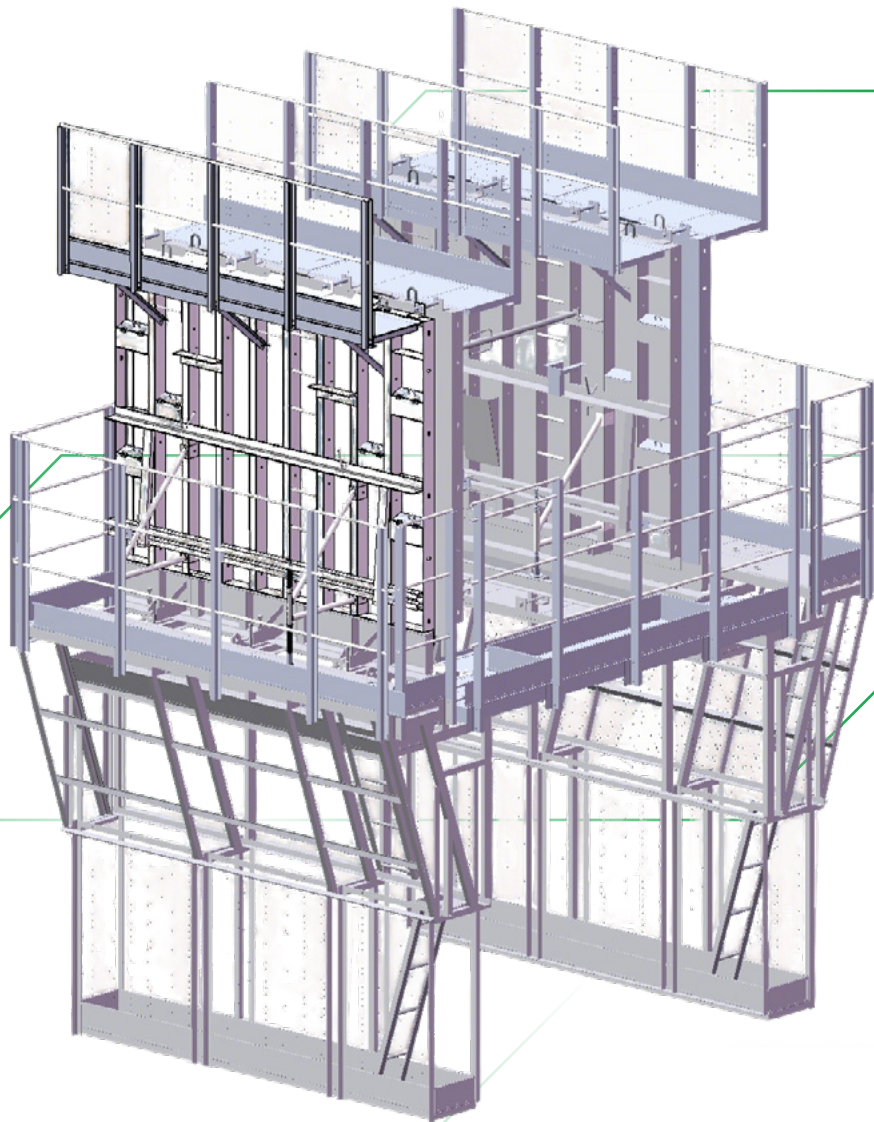
FORMWORK & SCAFFOLDING EXPERT  
ECO-SMART CONSTRUCTION  
1+N INTEGRATED SOLUTIONS

CHINESE LISTED COMPANY

STOCK CODE: SZ 300986

# PUBLIC HOUSING STEEL FORMWORK SYSTEM

## 公屋钢模体系



## COMPANY PROFILE 企业简介

GETO Group is mainly engaged in Green new building formwork and scaffolding (aluminium formwork, steel formwork, steel-framed timber formwork, climbing systems, fair-faced concrete formwork, and infrastructure formwork and scaffolding products), Prefabricated buildings (steel structures and PC), Modular housing (steel structures and PC), and Construction & decoration materials (tiles, doors & windows, lighting, custom furniture, etc.)

GETO also provides New energy including the investment, EPC construction, and operation of commercial and industrial "Photovoltaics, Storage, and Charging" projects, while providing the "Green Energy Future Living" one-stop residential energy solution.

In 2021, GETO was listed on the ChiNext board of the Shenzhen Stock Exchange in China (Stock Code: SZ 300986). We have established 12 production bases globally and registered the "GETO®" international trademarks in 32 countries and regions, with products and services reaching worldwide markets.

志特集团主营绿色新型建筑模架（铝模、钢模、钢框木模、爬升式模架、清水混凝土模架及公基建专用模架）、装配式建筑（钢结构与PC）、模块化房屋（钢结构与PC），以及各类结构和装修建筑材料（瓷砖、门窗、灯饰、定制家具等）。

志特还提供相关新能源，包括工商业“光、储、充”项目投资、EPC建设、运维，“绿能未来居”一站式家庭能源解决方案。

“志特新材”于2021年在A股创业板上市（股票代码：SZ 300986），目前已在全球设立12大生产基地，在32个国家和地区注册了“GETO®”国际商标，产品和服务遍及全球。

## CONTENTS 目录

01	<b>PUBLIC HOUSING STEEL FORMWORK OVERVIEW</b> 公屋钢模产品概述	
	Product Introduction 产品简介	P4
	Application 应用场景	P4
	Features & Advantages 产品特点与优势	P6
02	<b>PUBLIC HOUSING STEEL FORMWORK SYSTEM</b> 公屋钢模产品体系	
	Core Technical Parameters and Specifications 核心技术参数与规格	P7
	Main Components & System 主要构件与系统	P10
	Product Comparison 产品对比	P17
03	<b>SERVICE</b> 服务	P19

## PUBLIC HOUSING STEEL FORMWORK OVERVIEW 公屋钢模产品概述

### PRODUCT INTRODUCTION 产品简介

Public Housing Steel Formwork is standardized steel formwork for in-situ concrete casting in public housing construction. It is composed of steel plates and steel stiffeners, and is classified into various types according to application, including internal wall formwork, external wall formwork, elevator shaft steel formwork, working platforms, worker platforms, working cages, hanging cages, discharge platforms, and precast facade bridge. It is the mainstream and preferred formwork for the main structural construction of high-rise and large to medium-scale public housing projects, aligning with the requirements of standardization, cost-efficiency, and high-quality construction.

公屋钢模为公屋混凝土现浇施工的定型钢制模具，由钢板与型钢肋条组成，产品构件按用途分为内墙模板、外墙模板、轱胆铁模、工作台、企人台、工作笼、挂笼、出料台、佛沙桥等，是高层及大中型公屋主体结构施工的主流首选模板，适配公屋标准化、低成本、高质量建设需求。

### APPLICATION 应用场景

Public Housing Steel Formwork System is widely used in cast-in-place concrete construction for high-rise and large- to medium-scale residential buildings, particularly in public housing projects.

It is suitable for concrete casting of internal and external walls, slabs, beams, and columns, ensuring stable construction quality and efficient project execution.

公屋钢模广泛应用于公屋项目及高层、大中型住宅建筑的现浇混凝土施工。系统适用于内外墙、楼板、梁、柱等部位的混凝土浇筑，在保证施工质量的同时提升整体建造效率。



## FEATURES & ADVANTAGES 产品特点与优势



### High Strength & Stability 强度高、稳定性强

High structural rigidity with strong resistance to lateral pressure ( $\geq 60$  kN/m<sup>2</sup>), ensuring no bulging or deformation during concrete casting. 刚度高、抗侧压能力强 ( $\geq 60$  kN/m<sup>2</sup>)，浇筑过程中不涨模、不变形，结构稳定可靠。



### Excellent Concrete Finish 成型质量优

High-precision formwork controls surface flatness within  $\leq 0.8$  mm/m, delivering smooth concrete surfaces, improving inspection pass rates, and reducing plastering work. 模板平整度控制  $\leq 0.8$  mm/m，混凝土成型平整度与垂直度达标，提高验收通过率并减少抹灰工序。



### High Reusability & Optimized Cost 高周转、综合成本优

Reusable for approximately 80–150 cycles with low material loss, effectively reducing lifecycle construction costs for large-scale public housing projects. 周转次数约 80–150 次，材料损耗低，有效降低公屋项目全周期综合施工成本。



### Durability & Sustainability 耐久环保、适配性强

Weather-resistant steel structure allows outdoor storage with simple maintenance. Fully recyclable materials provide high residual value and support full structural application. 耐候性好，可露天堆放且维护简单；材料 100% 可回收、残值高，适配墙、柱、梁、板等主体结构施工。

## PUBLIC HOUSING STEEL FORMWORK SYSTEM 公屋钢模产品体系

### CORE TECHNICAL PARAMETERS AND SPECIFICATIONS 核心技术参数与规格

#### I . Base Material & Mechanical Parameters 基础材质与力学参数

Parameter Category 参数类别	Parameter Details 参数详情
Material 材质主体	Q235B steel panel + structural steel frame (waler commonly using 8#/10#/12# channel steel) Q235B 钢板 + 型钢骨架 (背楞常用 8#/10#/12# 槽钢)
Panel Thickness 面板厚度	4.0–5.0 mm
Rib Specification 肋条规格	125 × 75 × 3.0 mm, spacing 300–375 mm 125 × 75 × 3.0mm, 横向间距 300–375mm
Mechanical Performance 力学性能	Equivalent to Q235B steel, lateral pressure resistance $\geq 60$ kN/m <sup>2</sup> (suitable for high-rise concrete casting) 等同于 Q235B 钢，抗侧压力 $\geq 60$ kN/m <sup>2</sup> (适配高层混凝土浇筑)
Surface Accuracy 表面精度	Flatness $\leq 0.8$ mm/m, no misalignment, tight joints, leakage rate $< 0.1\%$ 平整度 $\leq 0.8$ mm/m, 无错台, 接缝严密, 漏浆率 $< 0.1\%$
Self Weight 自重	Large panel steel formwork: 125–185 kg/m <sup>2</sup> (adjusted according to panel thickness and waler density) 大钢模: 125–185 kg/m <sup>2</sup> (按面板厚度 / 背楞密度调整)

## II . Connection & Supporting Components Parameters 连接件与支承件技术参数

<b>Component Type</b> 部件类型	High-Strength Tie Rod 对拉高拉力螺丝	Waler 背楞
<b>Specification</b> 规格参数	Diameter $\Phi 16-\Phi 20$ mm 直径 $\Phi 16-\Phi 20$ mm	Double 8#/10# channel steel 双 8#/10# 槽钢
<b>Technical Requirement</b> 技术要求	Double-nut anti-loosening design. Material 4.6 / 8.8 Low-carbon alloy steel / Medium-carbon steel 双螺母防松设计。 材质 4.6 / 8.8 低碳合金钢 / 中碳钢	Spacing 600–900 mm, serving as primary structural support to control deformation 间距 600–900mm, 作为模板主支撑并控制变形
<b>Application</b> 应用场景	Reinforcement for shear walls and column formwork 剪力墙、柱模板加固	Main support of formwork system, deformation control 模板主支撑, 控制变形

## III . Formwork Specification Selection 模板规格选型

For high-rise public housing shear wall construction, steel panels with thickness of 4.0–5.0 mm are recommended. Waler spacing should be controlled within 800–900 mm to ensure stability without bulging or deformation during concrete casting.

高层公屋剪力墙施工建议选用 4.0–5.0 mm 面板，背楞间距控制在 800–900 mm 范围内，以确保浇筑过程中不涨模、不变形。

## IV . Design Coordination Principle 设计适配原则

Public housing projects typically adopt standardized unit layouts. Formwork systems should be customized according to unit drawings, with early coordination of openings such as doors, windows, and CBWD reserved holes, maintaining dimensional deviation within  $\pm 5$  mm.

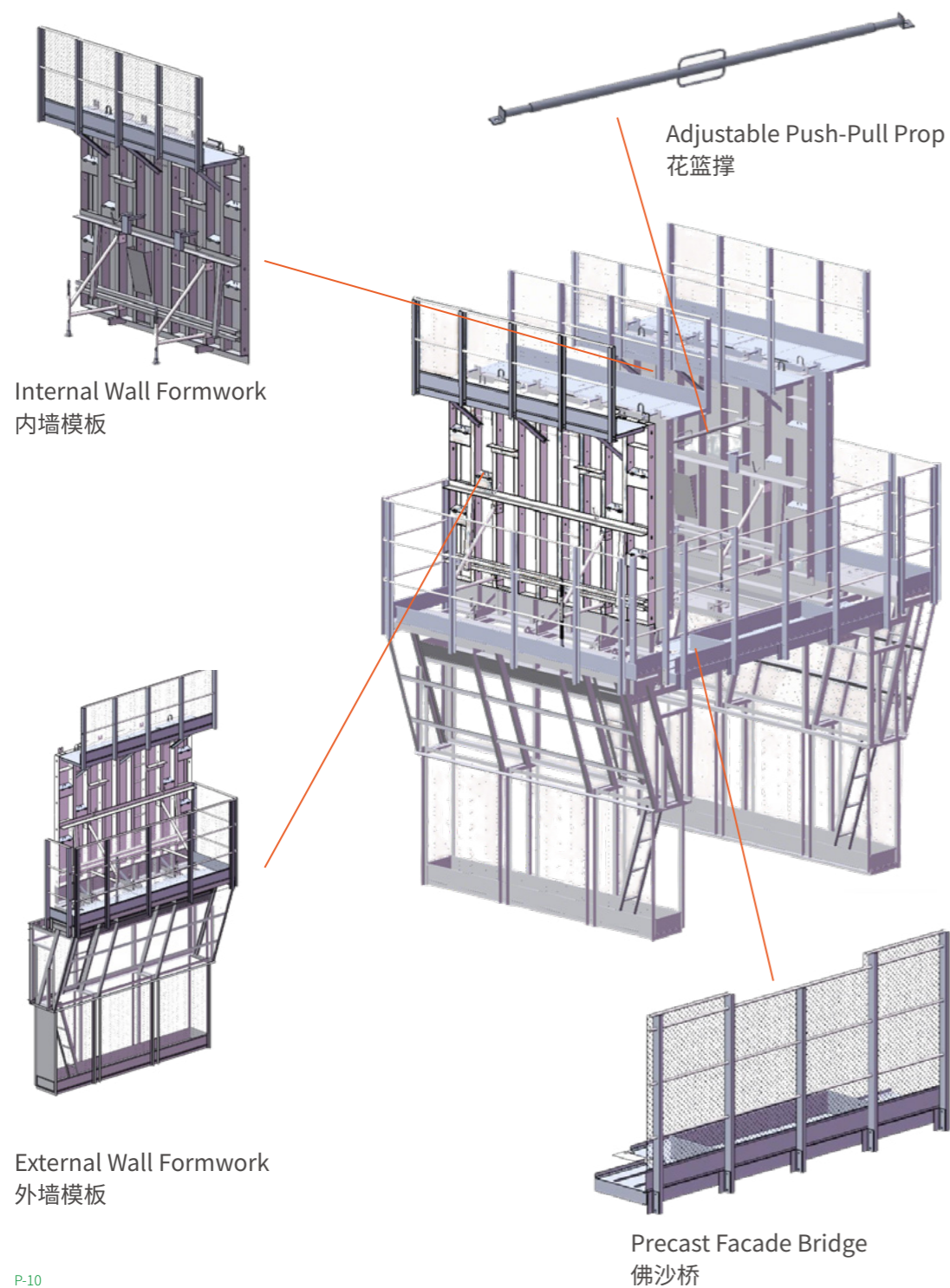
公屋户型标准化程度高，模板需依据户型图进行定制设计，并提前校核门窗及 CBWD 等预留孔洞位置，控制偏差在  $\pm 5$  mm。

## V . Turnover & Maintenance Management 周转与维护管理

Combined steel formwork systems typically achieve 80–150 reuse cycles, while large panel steel formwork reaches 100–120 cycles. Rust removal and cleaning after each cycle (Sa2.5 standard) are recommended to extend service life.

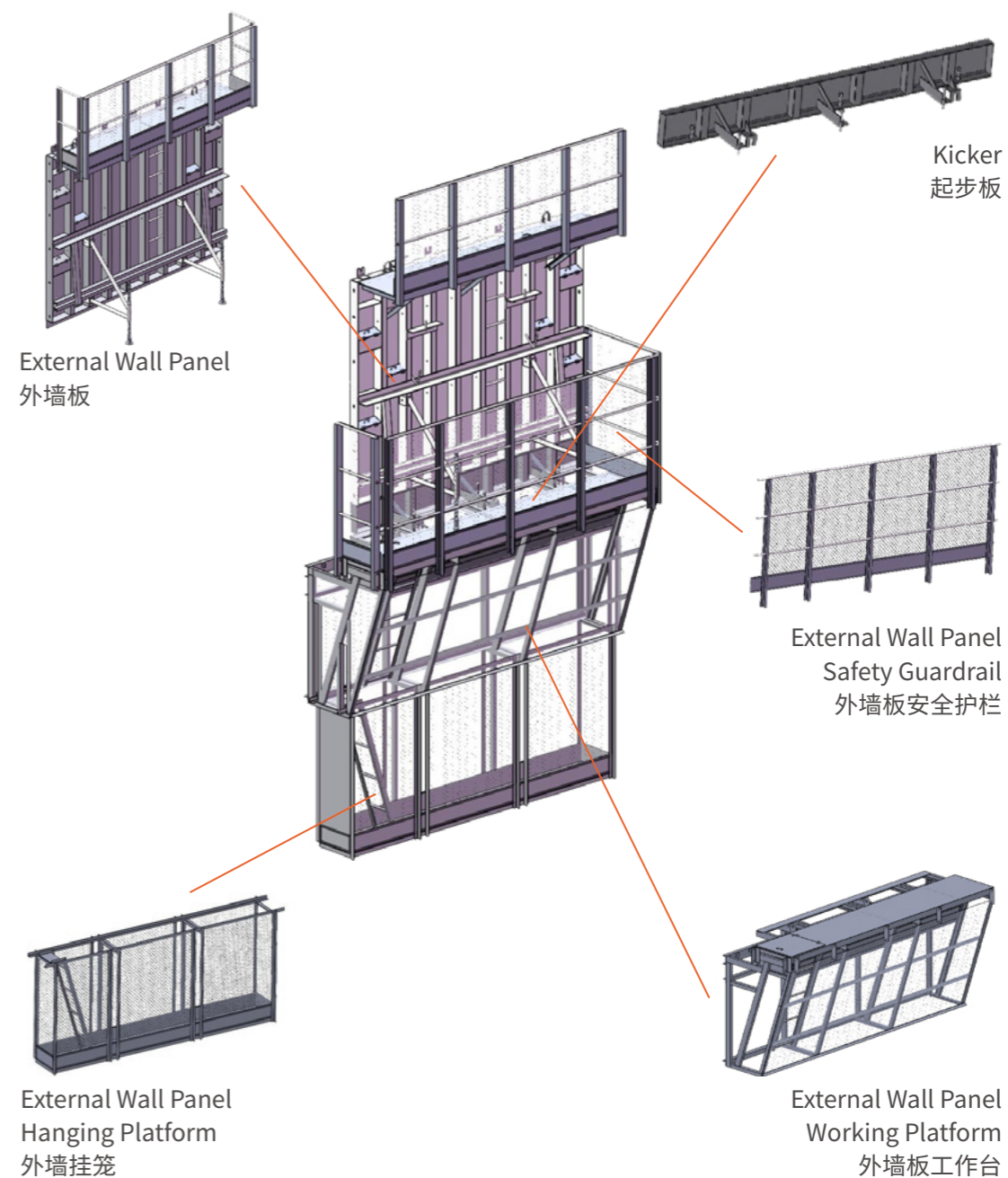
组合钢模板周转次数约 80–150 次，大钢模板周转 100–120 次；建议每次周转后进行除锈与清理（Sa2.5 等级），以延长使用寿命。

## MAIN COMPONENTS & SYSTEM 主要构件与系统

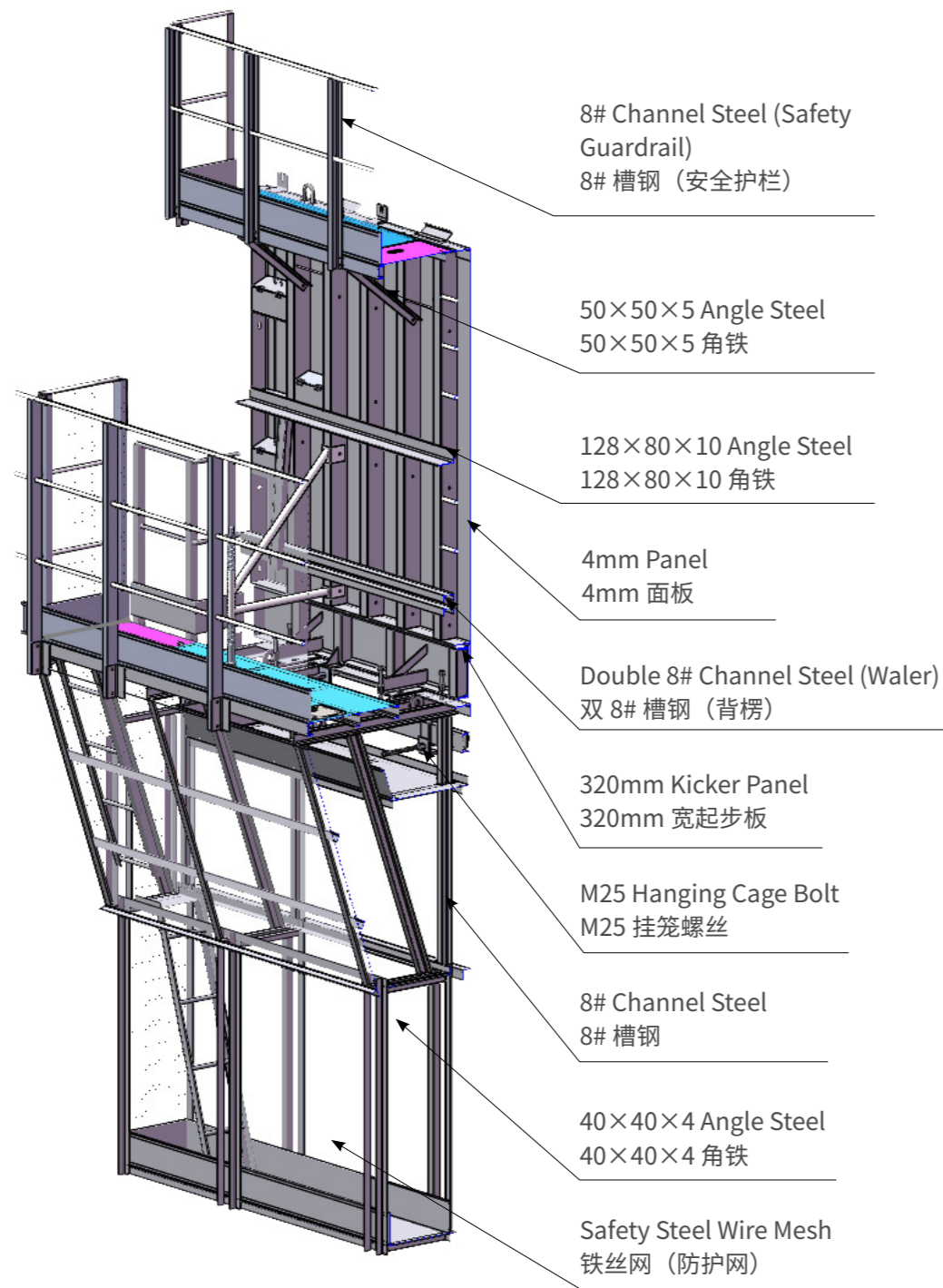


## External Wall Formwork 外墙模板

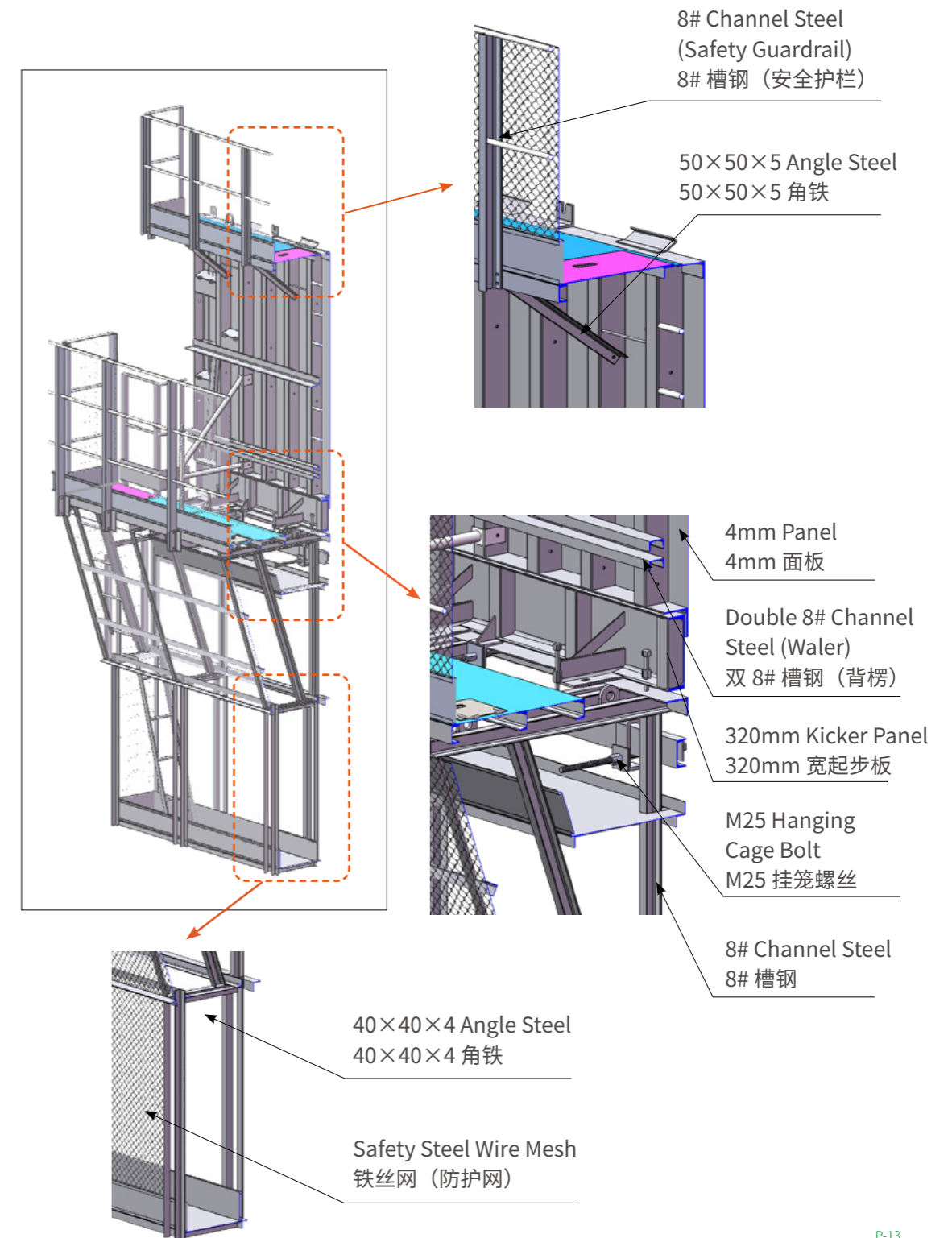
Designed for external wall concrete casting, ensuring structural stability, dimensional accuracy, and high-quality concrete surface finish.  
用于外墙混凝土浇筑施工，保证结构稳定性与尺寸精度，实现良好的混凝土成型效果。



Formwork Details  
模板细节

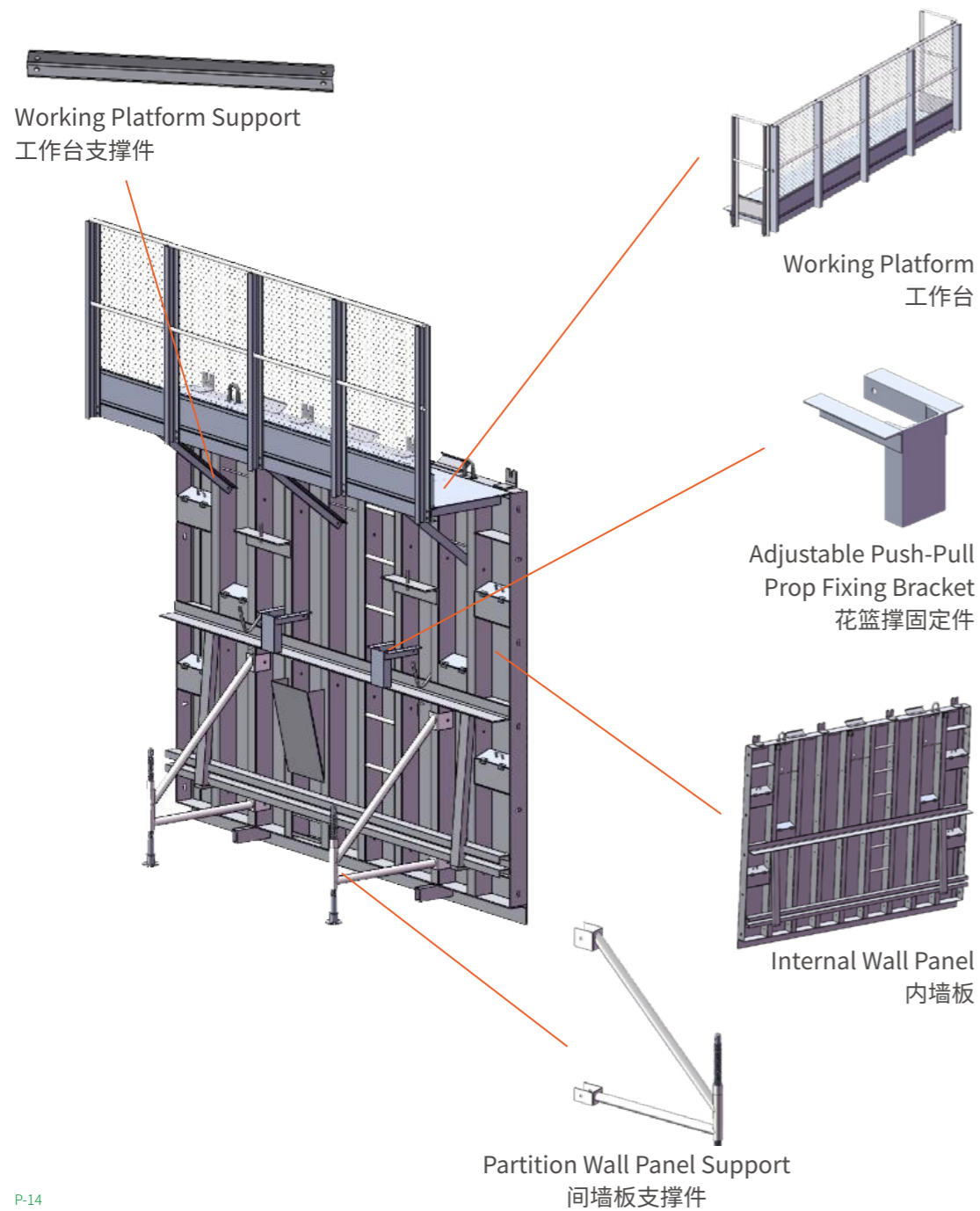


Formwork Details  
模板细节



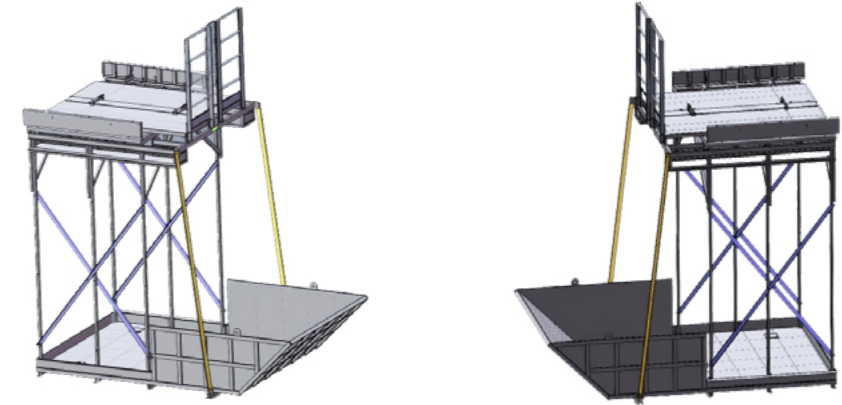
## Internal Wall Formwork 内墙模板

Applicable to internal wall construction, providing efficient assembly and reliable alignment control during concrete casting.  
适用于内墙结构施工，安装高效，浇筑过程中能够有效控制结构垂直度与定位精度。



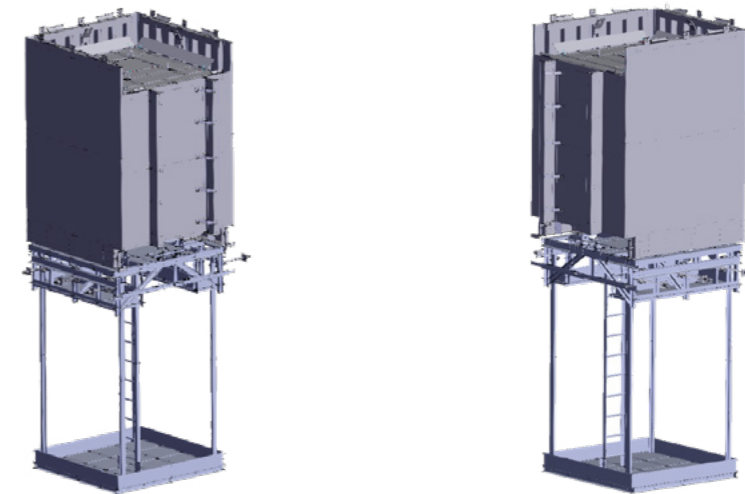
## Discharge Platform 出料台

Provides a safe and stable working platform for material transfer and concrete placement during construction.  
为施工过程中材料转运及混凝土作业提供安全稳定的操作平台。



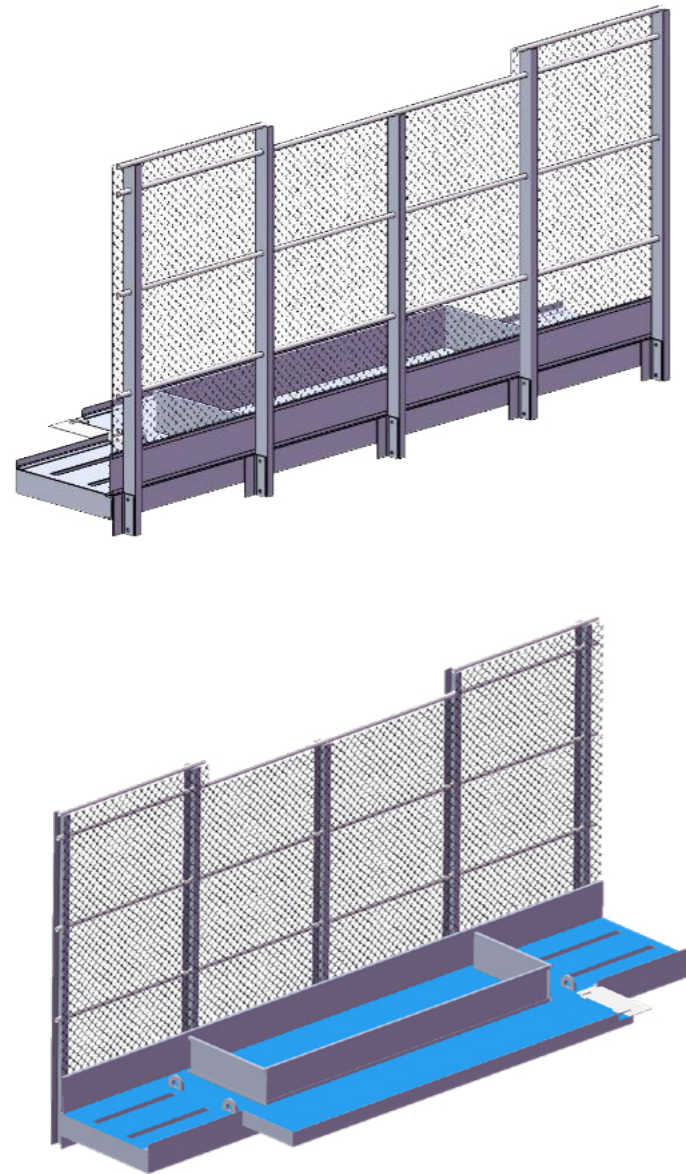
## Elevator Shaft Steel Formwork 电梯井钢模板

Specially designed for elevator shaft construction, providing stable support and precise alignment during concrete casting to ensure dimensional accuracy and verticality of shaft structures.  
用于电梯井结构混凝土施工，提供稳定支撑与精准定位控制，确保井道结构尺寸精度及垂直度要求。



## Precast Facade Bridge 佛沙桥

Precast facade bridge used for temporary access and operational linkage between construction zones, enhancing site accessibility and safety  
用于施工区域之间的临时通行与作业连接，提高现场施工通达性与安全性。



## PRODUCT COMPARISON 产品对比

Public Housing Requirement 公屋建设需求	Public Housing Steel Formwork System 公屋钢模体系	Timber Formwork 木模板	Aluminium Formwork 铝合金模板	Plastic Formwork 塑料模板
<b>Structural Strength &amp; Stability</b> 结构强度与稳定性	High rigidity and strong resistance to lateral pressure, suitable for main structural casting 刚度高、抗侧压能力强，适用于主体结构施工	Low rigidity, prone to deformation 强度低，易变形	High strength but sensitive to impact 强度高但易磕碰变形	Insufficient rigidity, unsuitable for large structures 刚度不足
<b>Concrete Finish Quality</b> 成型质量	Stable concrete quality with smooth surface, reducing plastering 成型稳定、表面平整，可减少抹灰	Easy slurry leakage, uneven surface 易漏浆，观感较差	Excellent surface finish, can achieve fair-faced concrete 成型质量优	Surface quality moderate 表面质量一般
<b>Reusability</b> 周转次数	80-150 cycles 80-150 次	5-8 cycles 5-8 次	150-300 cycles 150-300 次	20-50 cycles 20-50 次
<b>Lifecycle Cost</b> 综合使用成本	Balanced investment with lowest lifecycle cost 全周期综合成本最优	High material consumption, highest overall cost 损耗大，综合成本高	Very high initial investment 前期投入高	Limited economic benefit 使用范围受限

## PRODUCT COMPARISON 产品对比

Public Housing Requirement 公屋建设需求	Public Housing Steel Formwork System 公屋钢模体系	Timber Formwork 木模板	Aluminium Formwork 铝合金模板	Plastic Formwork 塑料模板
<b>Construction Efficiency</b> 施工效率	Standardized installation improves construction speed 标准化施工效率高	Manual dependent, slower progress 依赖人工, 效率低	Fast assembly, high efficiency 拼装快	Suitable only for small components 仅适小构件
<b>Durability &amp; Maintenance</b> 耐久与维护	Weather-resistant, outdoor storage allowed 可露天堆放, 维护简单	Easily damaged by moisture 易受潮损坏	Corrosion-free, low maintenance 不生锈	Poor temperature resistance 耐温性差
<b>Environmental Performance</b> 环保性	100% recyclable, high residual value 可回收利用, 残值高	Large construction waste 建筑垃圾多	Recyclable 可回收	Partial recyclable 部分可回收
<b>Application in Public Housing</b> 公屋适用性	Widely used for main structures of public housing projects 公屋主体结构主流选择	Used only for irregular or small areas 仅用于异形小部位	Applicable to a very large number of public housing units 适用于极大数量公屋	Used as auxiliary material 多用于辅材

Public Housing Steel Formwork System achieves the best balance between construction quality, efficiency, and lifecycle cost, making it the mainstream solution for public housing structural construction.

公屋钢模体系在施工质量、效率与综合成本之间实现良好平衡，是公屋主体结构施工的主流选择。

## SERVICE 服务



# GETO Group

**Headquarters:**

Greater Bay Area—No. 13 Heqing Road, Tsuihang New District, Zhongshan City, Guangdong Province

**Southern China Production Base I :**

Cuishan Lake Science and Technology Park, Kaiping, Jiangmen City ,Guangdong Province

**Southern China Production Base II :**

Huizhou Industrial Transfer Industrial Park, Huizhou City, Guangdong Province

**Eastern China Production Base I :**

Guangchang Industrial Park, Fuzhou City, Jiangxi Province

**Central China Production Base:**

Hi-tech Industry Development Zone, Xianning City, Hubei Province

**Northern China Production Base:**

China Aluminium Industrial Park, Linqu, Weifang City, Shandong Province

**Southwest China Production Base:**

Modern Manufacturing Industrial Park, Tongnan High-Tech District, Chongqing City

**Northwest China Production Base:**

The Circular Economy Park, Anding District, Dingxi City, Gansu Province

**Hainan Production Base:**

Gold Medal Port Industrial Park, Lingao County, Hainan Province

**ASEAN Production Base:**

Negeri Sembilan, Malaysia

**Singapore Production Base :**

West Region, Singapore

**Saudi Arabia Production Base:**

Riyadh, Saudi Arabia

---

## Contact

**Sales Hotline:** 0086-760-88589004

**E-mail:** [geto\\_market@geto.com.cn](mailto:geto_market@geto.com.cn)

**Website:** [www.getoformwork.com](http://www.getoformwork.com)

20260331V1

